



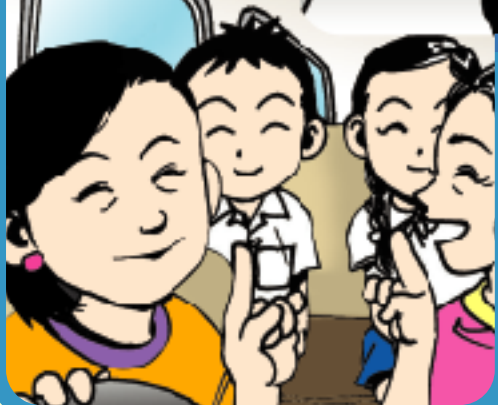
6.

車輛行駛時，切勿離開座位  
Must remain seated all the way



7.

上落車時要遵守秩序  
Must board and alight from a school bus/nanny van in an orderly manner



8.

必須聽從司機和保姆的指示  
Must follow instructions of the driver and escort

# 乘搭校巴及保姆車 安全守則

## School Transport Safety Rules

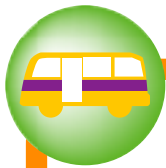


運輸署  
Transport Department

全心全意 以誠待人  
PUTTING OUR HEARTS INTO IT



道路安全議會  
The Road Safety Council

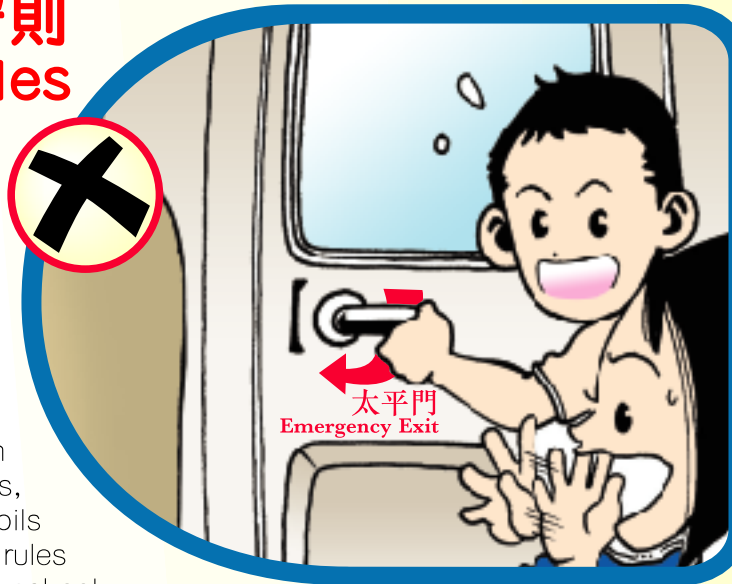


# 乘搭校巴及保姆車安全守則

## School Transport Safety Rules

校巴和保姆車是不少學童每天乘坐的交通工具，讓他們認識乘搭學校車輛的安全守則至為重要。學校，老師，家長和監護人，校車司機以及學童本身，都可以為提昇學童乘坐學校車輛的安全盡一分力。以下是學童乘搭校巴及保姆車時應該遵守的規則：

A great number of pupils take school buses and nanny vans every day. It is important to get the pupils to know the safety rules when taking school transport vehicles. In promoting school transport safety, schools, teachers, parents, guardians, school transport drivers and pupils themselves all have a part to play. The following are the rules that the pupils should be asked to obey when taking school buses/ nanny vans.



1. 不可把玩緊急出口車門 (太平門)  
Don't play with the emergency exit door



2. 乘車途中切勿與司機談話或大聲呼叫  
Don't talk to the driver or shout during the journey



### 學校私家小巴

#### School Private Light Bus

3. 不可將頭、手或身體任何部分伸出窗外  
Don't put the head, hands or any part of body out of the window



4. 車未停定，切勿上車或落車  
Don't get on or off a school bus/ nanny van while it's still moving



5. 乘車時切勿飲食或玩耍  
Don't eat, drink or play during the journey.